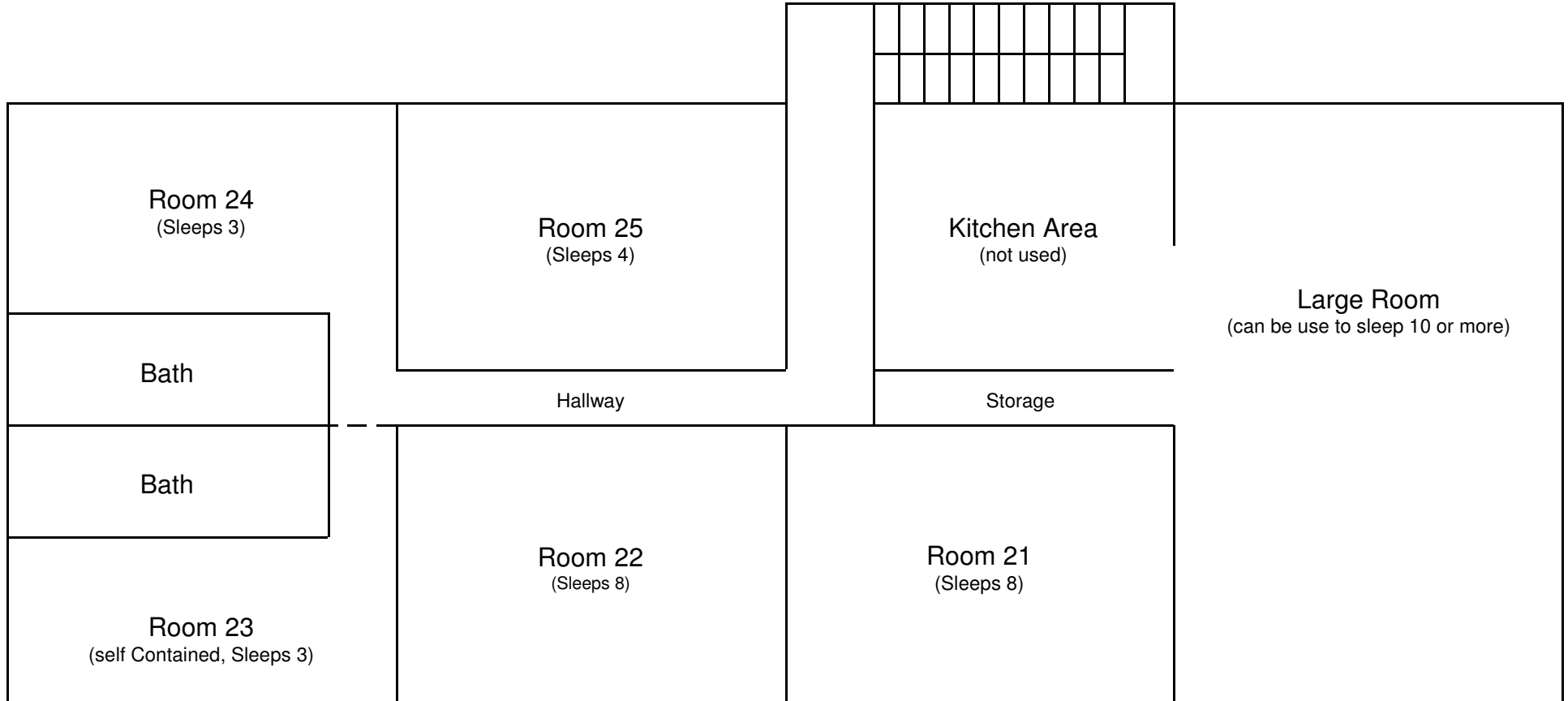
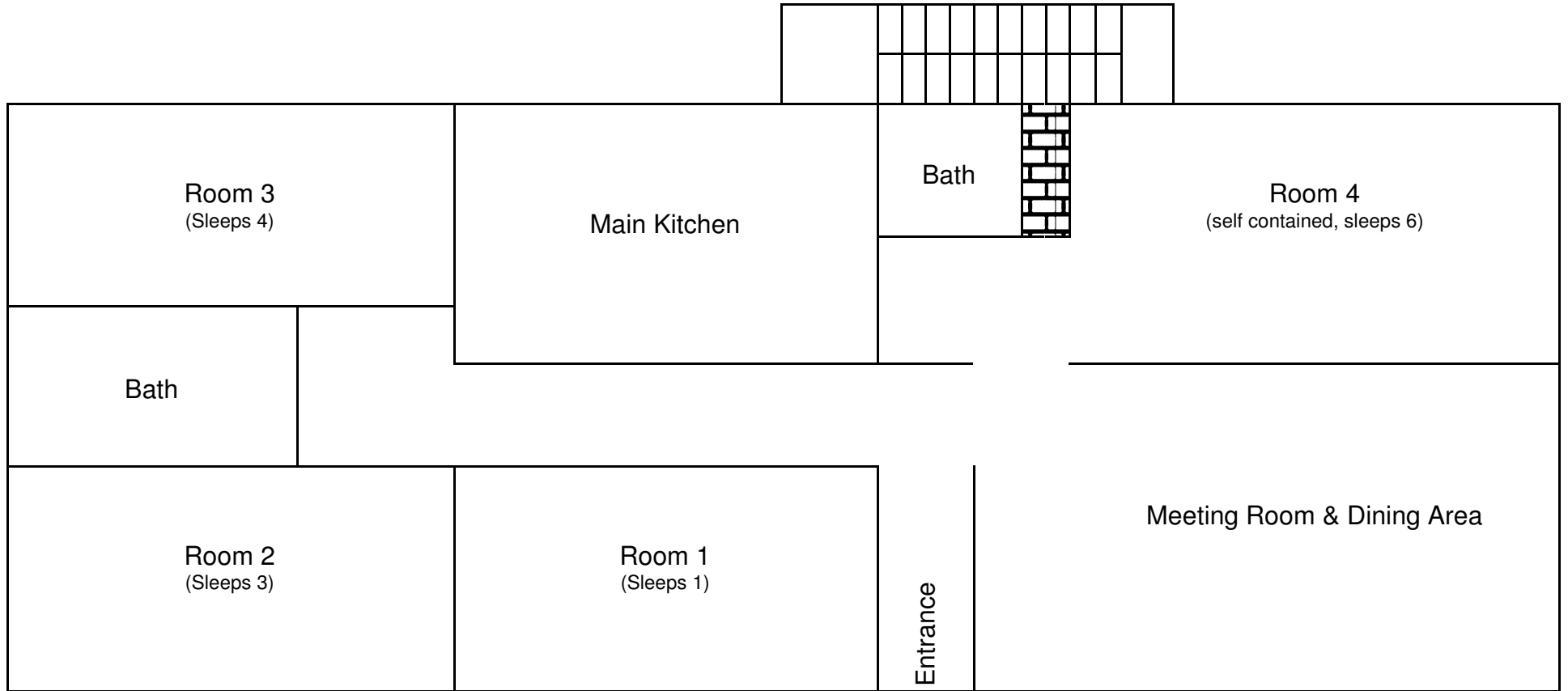


Lookout Ridge Top Floor

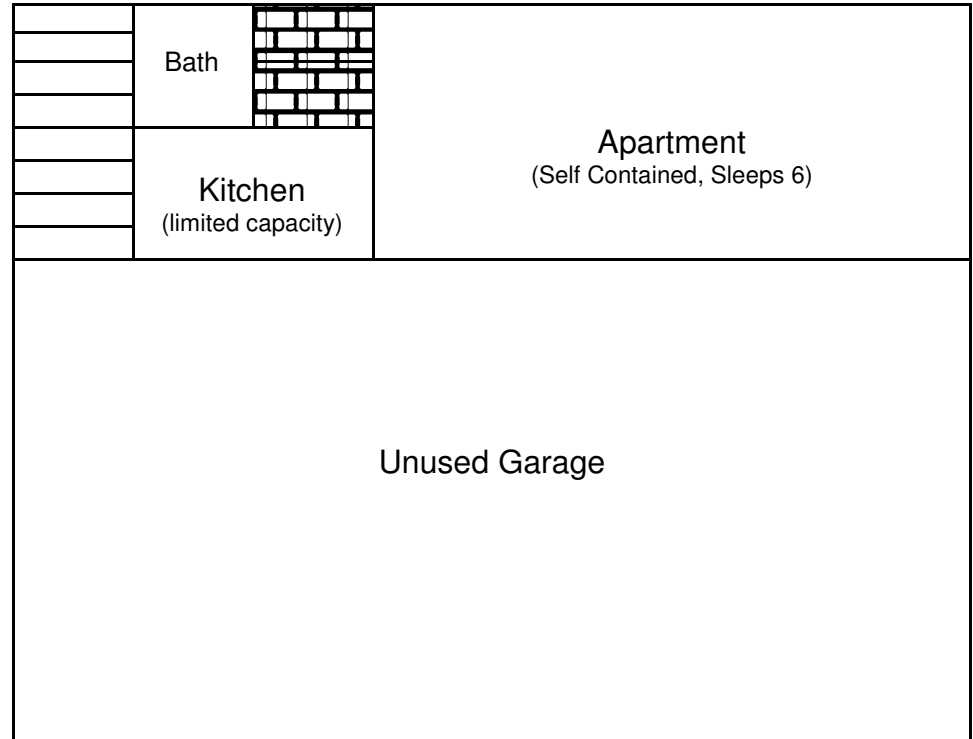
Additional beds can be place in most rooms
(not to scale)



Lookout Ridge Main Floor
(not to scale)



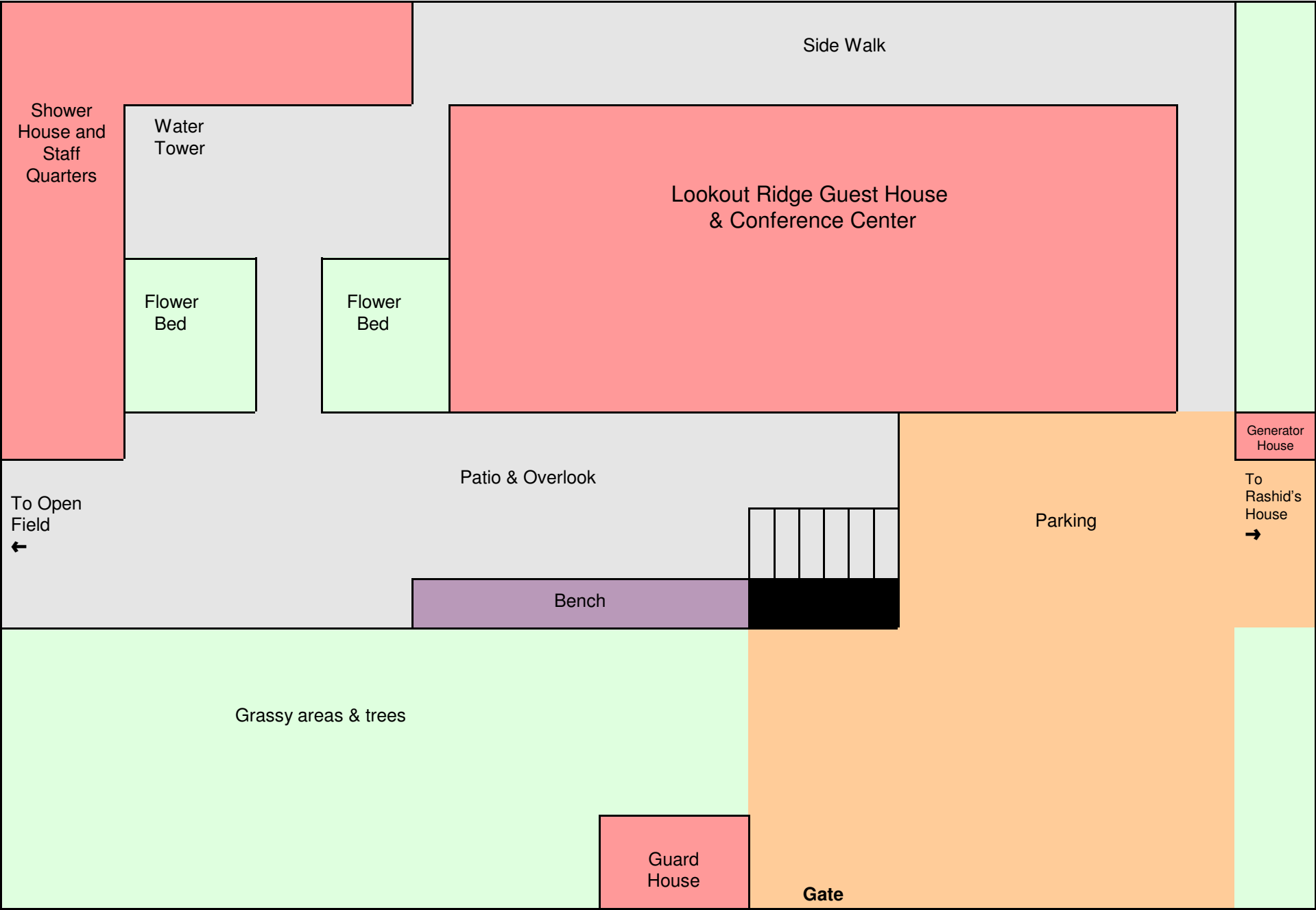
Ground Level Apartment



Notes:

1. Lookout Ridge is a safe and secure concrete, brick, and steel facility with security bars on all windows and doors within a gated compound with a resident guard who stands watch from dusk to dawn
2. There is an adjacent facility which has extra toilet and shower facilities plus resident housing for Lookout Ridge staff.
3. The facility has electricity (220 v, 50 cycle) but Uganda continues to experience roving blackouts throughout their power grid so we never know on any given day if and when we will have power. We have a generator (220v also) but generally runs from just before sundown to around 10:00 p.m. These hours can be extended in case of need.
4. All restrooms have standard flush toilets, sinks, and hot water showers. Bath towels and soap are provided.
5. Three meals are served each day and times can be adjusted to meet the needs of teams. Coffee, tea, and fresh fruits are typically available through the day. Sack lunches can be prepared with advanced notice.

Lookout Ridge Grounds
(Not to Scale)



Shower House and Staff Quarters

Water Tower

Flower Bed

Flower Bed

Lookout Ridge Guest House & Conference Center

Side Walk

Patio & Overlook

Bench

Parking

Generator House

To Rashid's House

To Open Field



Grassy areas & trees

Guard House

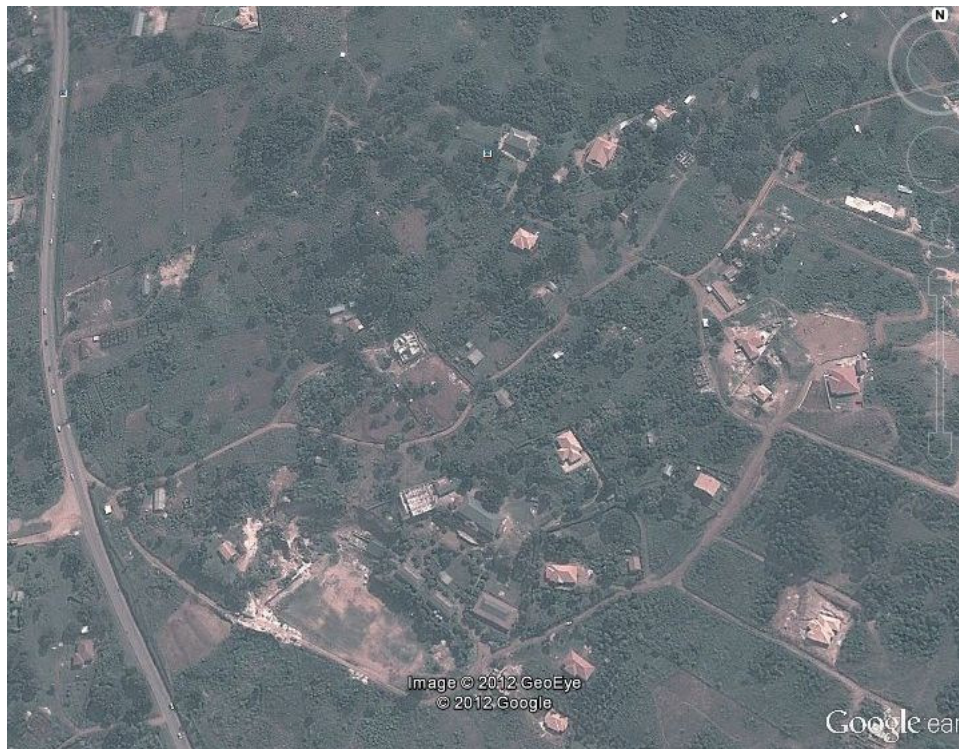
Gate

Lookout Ridge Information

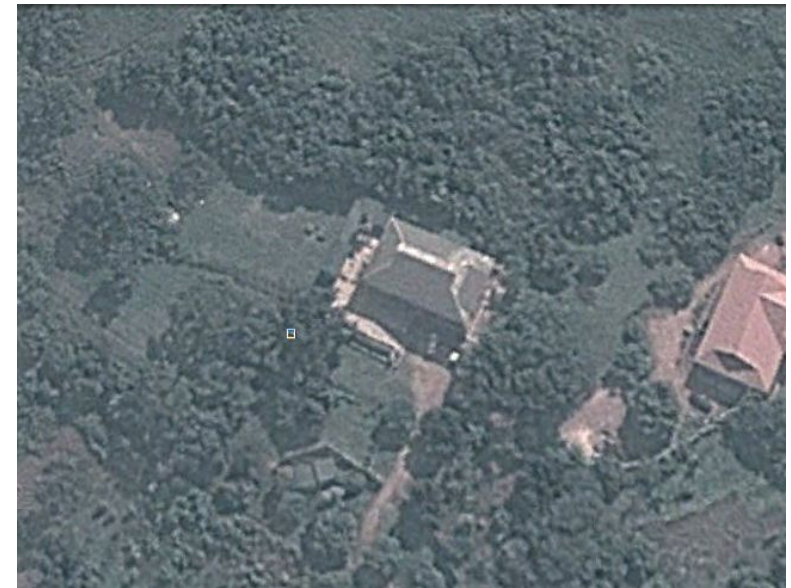
Location 0°09'59.59" north longitude & 32°32'47.97" east latitude with an elevation of 4181 feet above sea level

Travel distances along Entebbe Road from Kampala to Entebbe Airport

EBB Airport			Lookout Rige	Kajjansi Walkover	Muntungo	Africa Bible University	Kampala
0			22		28	30/31	40
40			18		11	9/8	0
				access to Westminster Seminary, & MAF	Pastor Sam Kisembo's Church & School	Laboa Quality Shopping Center	



This Google Earth view show Entebbe Road to the left with Lookout Ridge near the top center. The compound near the bottom center is Rashid Luswa's high school. You continue north on Entebbe Road to Kampala.



This Google Earth view zeros in on Lookout Ridge. The house to the right with the tan roof is the home of Rashid Luswa, the ACTI Field Director.